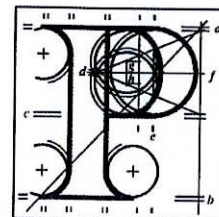


Our Case Number: ABP-316119-23



**An
Bord
Pleanála**

Maria Gavin
Apartment 111 Kilmainham Square
The Old Chocolate Factory
Kilmainham
Dublin 8
D08 X394

Date: 01 June 2023

Re: DART+ South West Electrified Heavy Railway Order - Hazelhatch & Celbridge Station to Heuston Station,
and Hesuton Station to Glasnevin
County Dublin and County Kildare

Dear Sir / Madam,

An Bord Pleanála has received your recent submission and oral hearing request (including your fee of €50) in relation to the above-mentioned proposed Railway Order and will take it into consideration in its determination of the matter.

The Board will revert to you in due course with regard to the matter.

The Board has absolute discretion to hold an oral hearing in respect of any application before it, in accordance with section 218 of the Planning and Development Act 2000, as amended. Accordingly, the Board will inform you on this matter in due course.

Please be advised that copies of all submissions/observations received in relation to the application will be made available for public inspection at the offices of the relevant County Council(s) and at the offices of An Bord Pleanála when they have been processed by the Board.

More detailed information in relation to strategic infrastructure development can be viewed on the Board's website: www.pleanala.ie.

If you have any queries in the meantime, please contact the undersigned. Please quote the above mentioned An Bord Pleanála reference number in any correspondence or telephone contact with the Board.

Yours faithfully,

Eimear Reilly
Executive Officer
Direct Line: 01-8737184

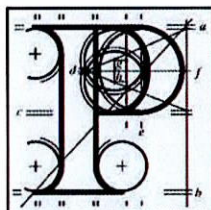
Teil
Glaao Áitiúil
Facs
Láithreán Gréasáin
Ríomhphost

Tel
LoCall
Fax
Website
Email

(01) 858 8100
1890 275 175
(01) 872 2684
www.pleanala.ie
bord@pleanala.ie

64 Sráid Maoilbhríde
Baile Átha Cliath 1
D01 V902

64 Marlborough Street
Dublin 1
D01 V902



An
Bord
Pleanála

Observation on a Strategic Infrastructure Development Application

Observer's details

1. Observer's details (person making the observation)

If you are making the observation, write your full name and address.

If you are an agent completing the observation for someone else, write the observer's details:

(a) Observer's name

Maria Gavin

(b) Observer's postal address

Apt 111 Kilmainham square, The Old Chocolate
Fcatory, Kilmainham D08 X394

Agent's details

2. Agent's details (if applicable)

If you are an agent and are acting for someone else **on this observation**, please **also** write your details below.

If you are not using an agent, please write "Not applicable" below.

(a) Agent's name

Click or tap here to enter text.

(b) Agent's postal address

Click or tap here to enter text.

Postal address for letters

3. During the process to decide the application, we will post information and items to you or to your agent. For this **current application**, who should we write to? (Please tick ✓ one box only)

You (the observer) at the postal address in Part 1

☒

The agent at the postal address in Part 2

☐

Details about the proposed development

4. Please provide details about the **current application** you wish to make an observation.

- (a) **An Bord Pleanála case number for the current application (if available)**
(for example: 300000)

Click or tap here to enter text.

- (b) **Name or description of proposed development**

Dart + South West Railway Electified Heavy Rail

- (c) **Location of proposed development**

(for example: 1 Main Street, Baile Fearainn, Co Abhaile)

Heuston Station to Glasnevin via Phoenix Park Tunnel

Observation details

5. Grounds

Please describe the grounds of your observation (planning reasons and arguments). You can type or write them in the space below. There is **no word limit** as the box expands to fit what you write.

You can also insert photographs or images in this box. (See part 6 – Supporting materials for more information).

- Construction - overnight works
- Increased noise
- Vibration
- Pollution – chemical
- Disruption to quality of life

Supporting materials

6. If you wish, you can include supporting materials with your observation.

Supporting materials include:

- photographs,
- plans,
- surveys,
- drawings,
- digital videos or DVDs,
- technical guidance, or
- other supporting materials.

You can insert photographs and similar items in your observation details: grounds (part 5 of this form).

If your supporting materials are physical objects, you must send them together with your observation by post or deliver it in person to our office. You cannot use the online uploader facility.

Fee

7. You **must** make sure that the correct fee is included with your observation.

Observers (except prescribed bodies)

- strategic infrastructure observation is €50.
- there is no fee for an oral hearing request

Oral hearing request

8. If you wish to [request the Board to hold an oral hearing](#), please tick the “Yes, I wish to request an oral hearing” box below.

You can find information on how to make this request on [our website](#) or by contacting us.

If you do not wish to request an oral hearing, please tick the “No, I do not wish to request an oral hearing” box.

Yes, I wish to request an oral hearing

☒

No, I do not wish to request an oral hearing

☐

Final steps before you send us your observations

9. If you are sending us your observation using **the online uploader facility**, remember to save this document as a Microsoft word or PDF and title it with:

- the case number and your name, or
- the name and location of the development and your name.

This also applies to prescribed bodies sending an observation by email.

If you are sending your observation to us by post or delivering in person, remember to print off all the pages of this document and send it to us.

For Office Use Only

FEM – Received		SIDS – Processed	
Initials		Initials	
Date		Date	

Notes